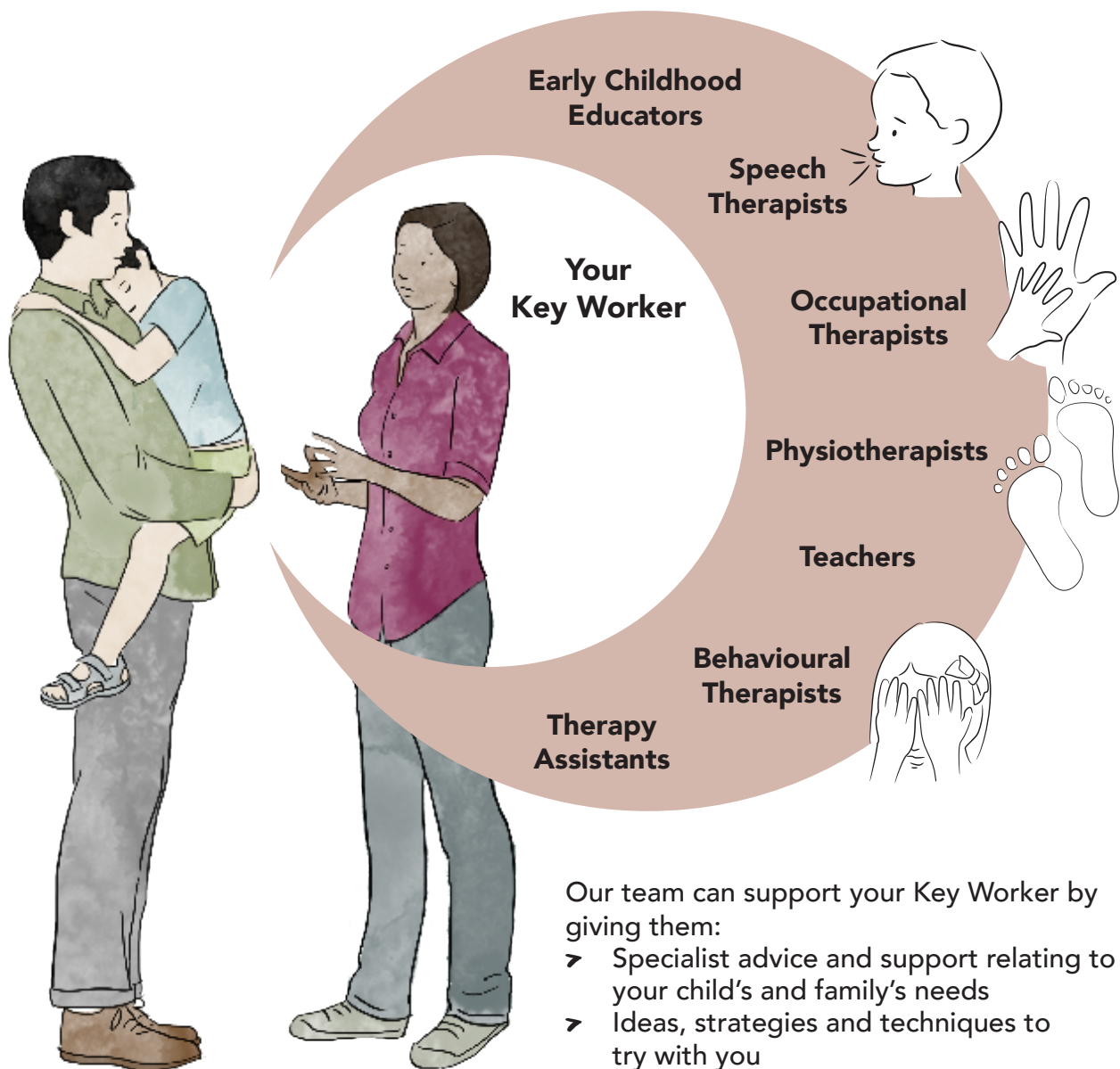


Your Key Worker is part of a team

Your Key Worker is your main point of contact. However, the whole team at Plumtree also support your Key Worker. They are a deep pool of information, expertise and resources.



Our team can support your Key Worker by giving them:

- Specialist advice and support relating to your child's and family's needs
- Ideas, strategies and techniques to try with you

A small team is better for your child and family. However, we can add members to your team, if you need them, to help work towards new goals. When we do, our team approach ensures you get the best outcomes, because all of the professionals are in one place.

